

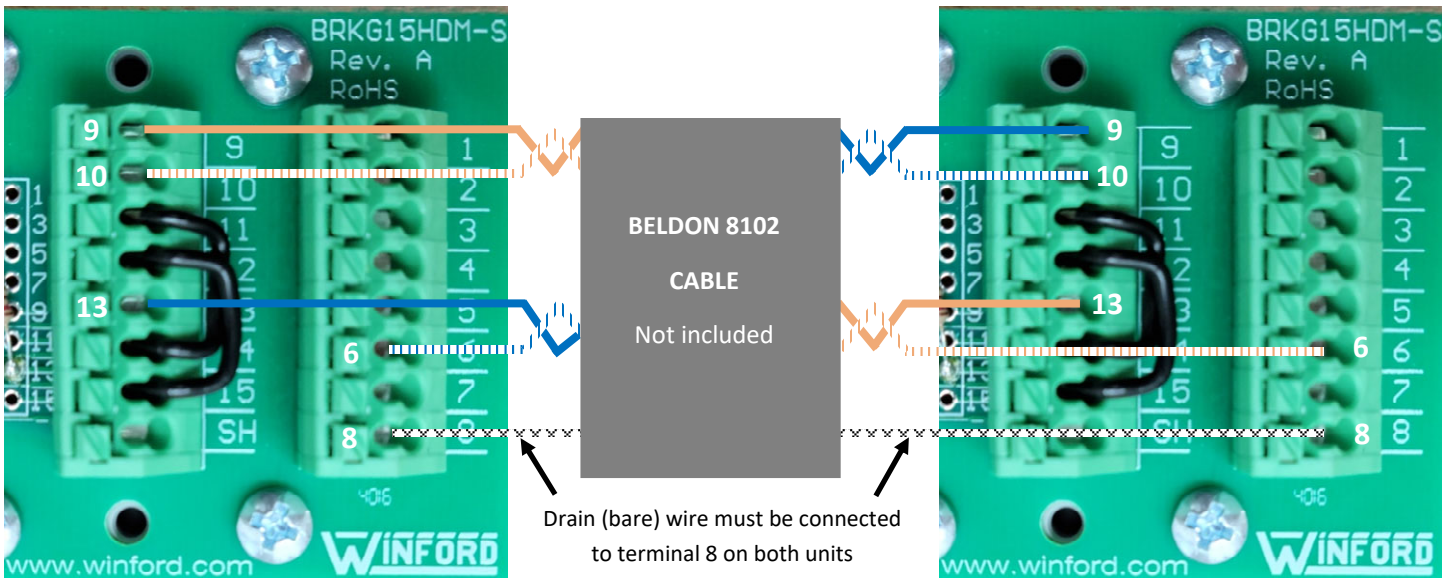
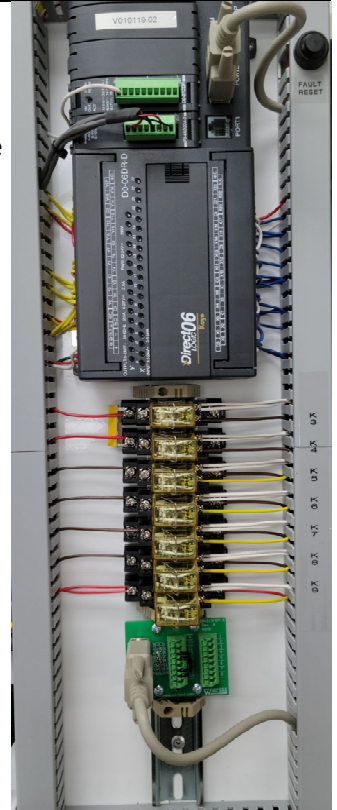
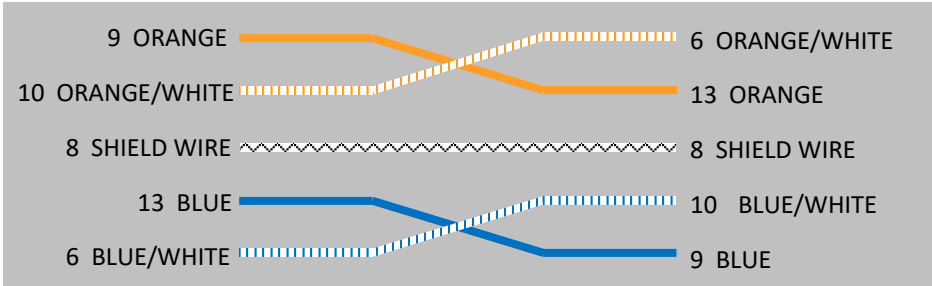
V DUAL

The Dual Kit consists of (2) interface modules and (2) internal cables.

Both gates are connected together using **Beldon 8102 or equivalent to be supplied by the installer.**

The cable should be run in buried conduit from controller to controller. This cable is a low capacitance communications cable and should only be substituted (*if necessary*) with cable that has equivalent capacitance specifications.

MASTER Interface Module	SLAVE Interface Module
----------------------------	---------------------------



Note: ORANGE & ORANGE /WHITE and BLUE & BLUE/WHITE must be a twisted pair. If in doubt ohm out pairs or use a tone sniffer.

Connect the included data cable from the PLC to the interface module on both operators.

Using the programmer go to **SYSTEM**

Set the master side to **DUAL/MASTER** & the slave side to **DUAL/SLAVE** with the programmer

- The AUTO CLOSE timer must be **ENABLED** on both gates. The **MASTER (primary)** determines the close time.
- Use **FREE EXIT TB2 -9 & -10** to test dual operation.
- The programmer will operate only the gate it is connected to.

A latch time of 1 second minimum is required to active both gates.