

M SERIES INVERTER REPLACEMENT

Removing existing inverter

TOOLS REQUIRED

7mm socket

7/16 socket

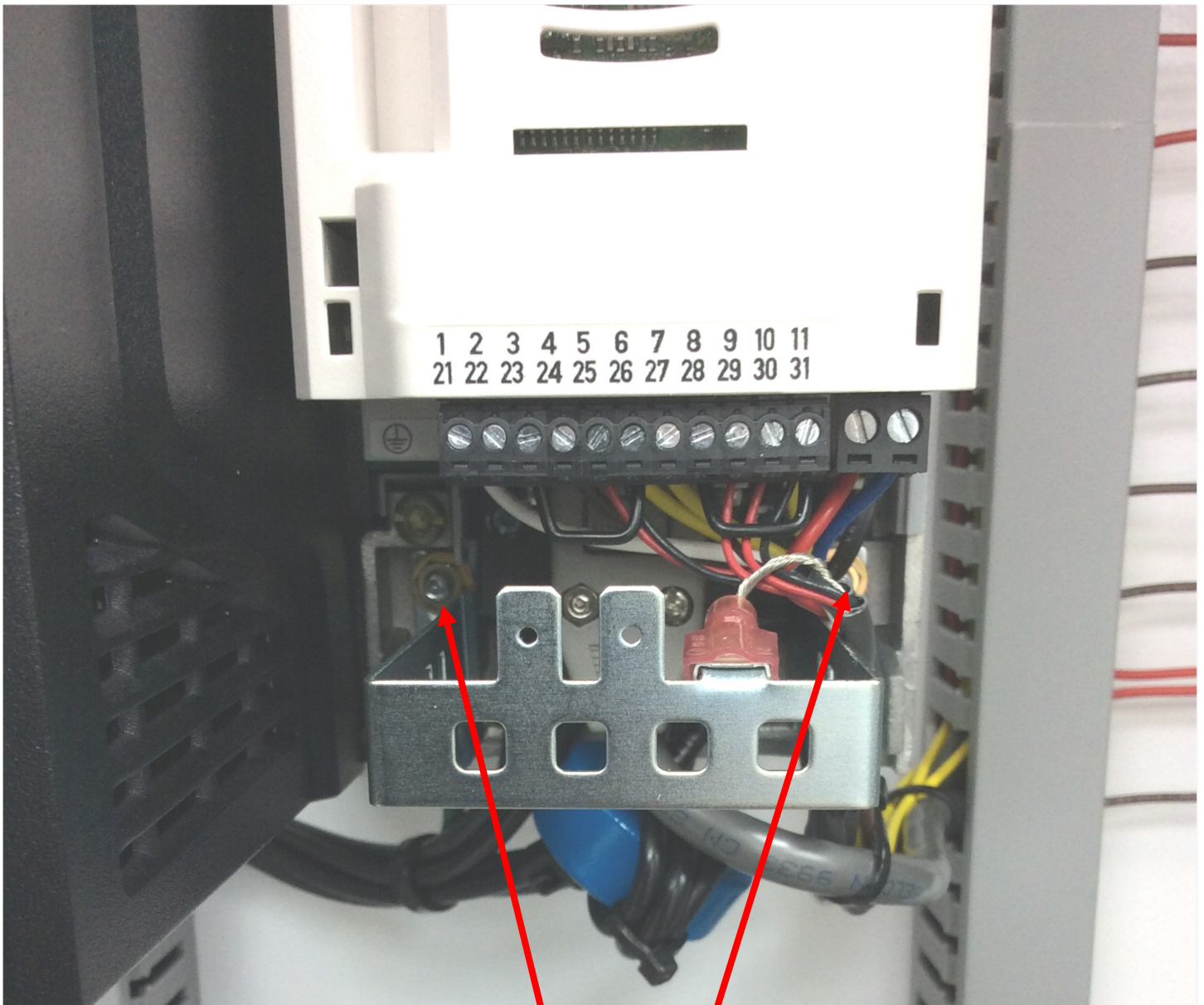
Socket extension

Small blade screwdriver

Be sure the power has been off for at least 10 minutes before proceeding.

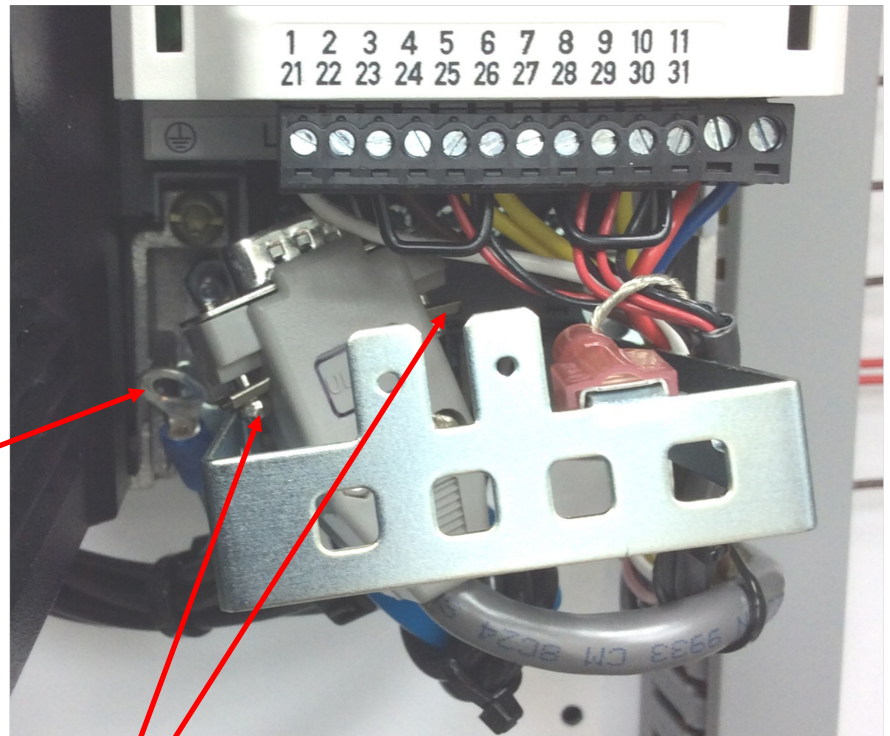
Loosen cover screw and remove cover





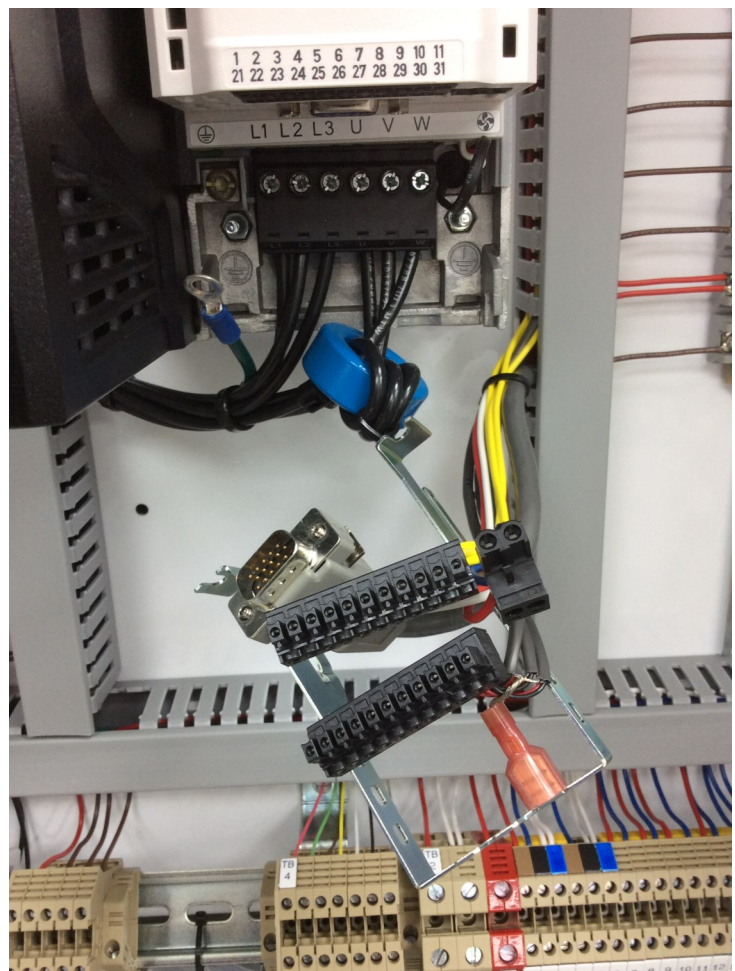
Remove two nuts using a 7mm socket

Remove ground lug

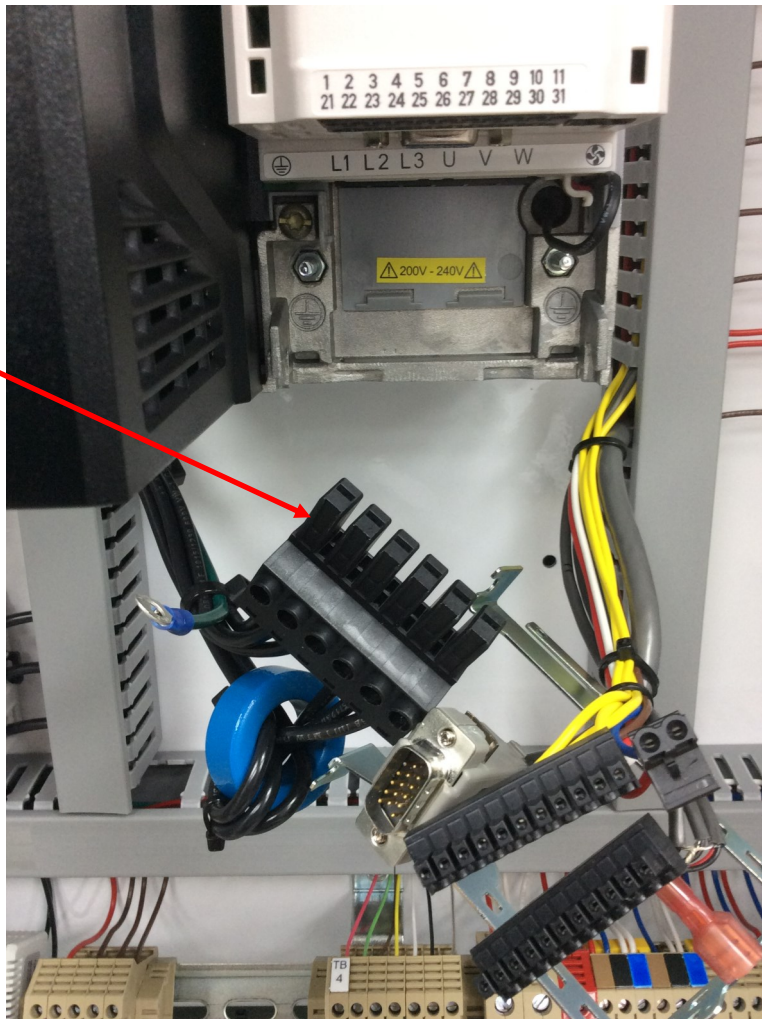


Loosen two screws on connector and remove from socket

Gently pry connectors off
with a small flat blade
screwdriver



Gently remove power connector using a small flat blade screwdriver



There are four 1/4" hex bolts that secures the inverter.

Loosen the two bottom bolts about one turn then remove the two top bolts.

Lift the inverter up and remove

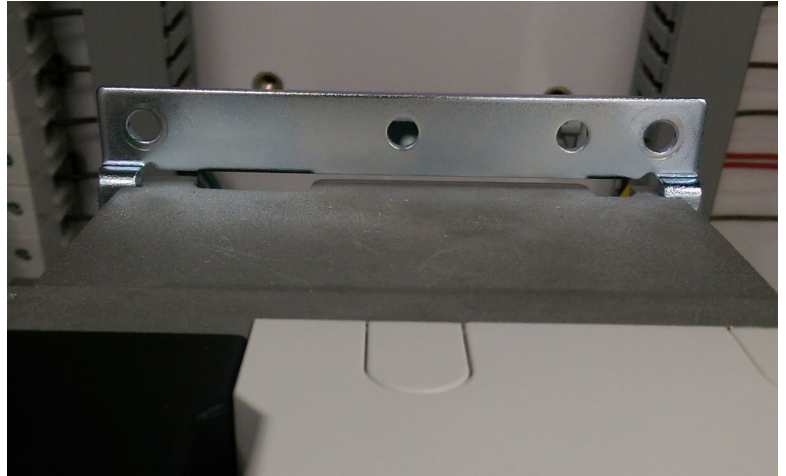


Installing the replacement inverter

Slide the top mounting bracket on the top of the replacement inverter.

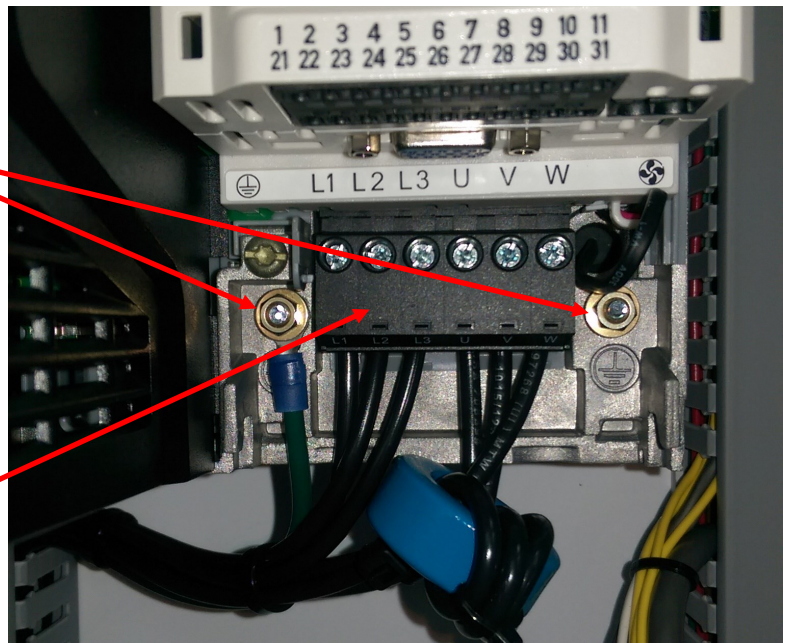
Slide the inverter back in to the bottom bracket and secure with the two 1/4" bolts.

Tighten all four 1/4" hex bolts.

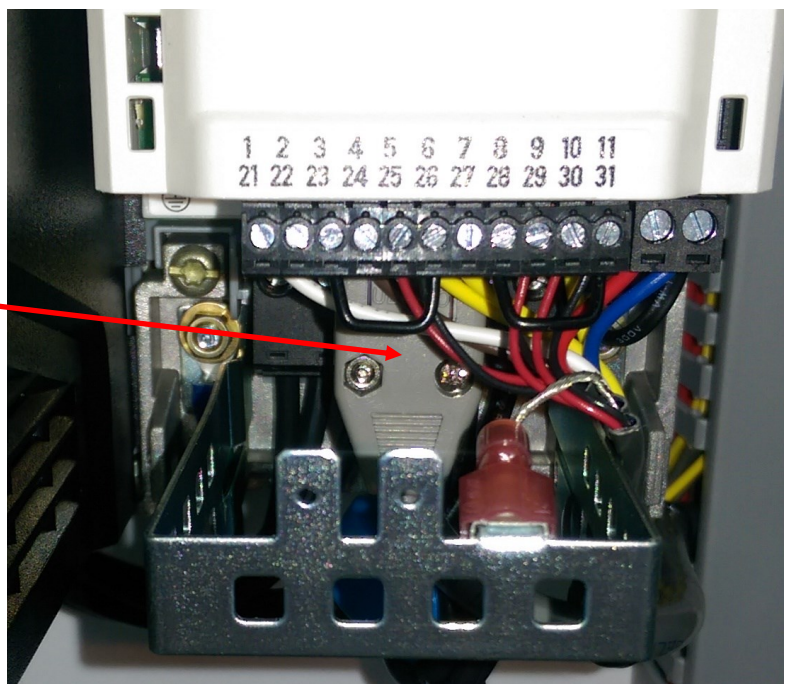


Reattach the ground lug and both nuts. Do not tighten yet.

Insert the power connector in to the inverter. Make sure connector is well seated.



Re-install connector and secure with both side screws.



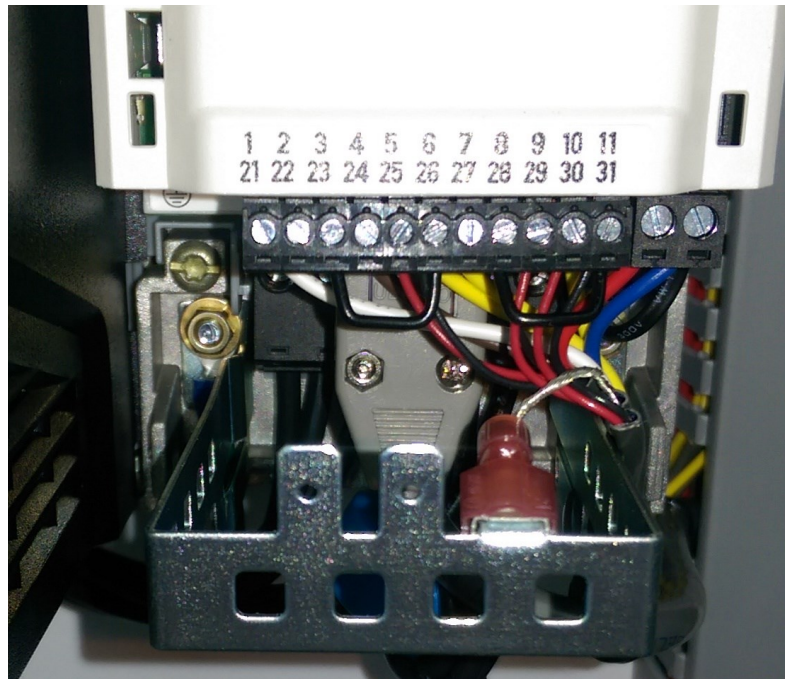
Slide the left side of the grounding bracket UNDER the ground lug and push up to the stud.

Grounding Bracket



Re-connect remaining connectors.

Push grounding bracket up and tighten both nuts.



Replace cover and test.