

RETRO-FIT KIT FOR SP SERIES TO M SERIES INVERTER

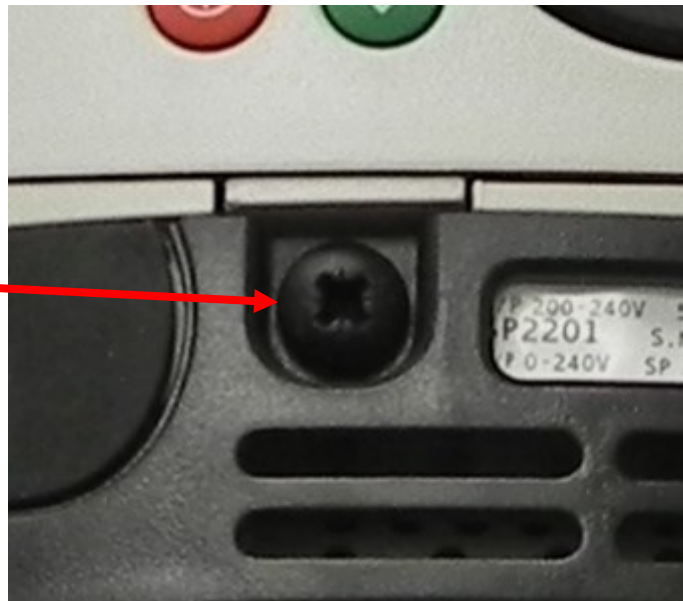
Removing existing inverter

Be sure the power has been off for at least 10 minutes before proceeding.

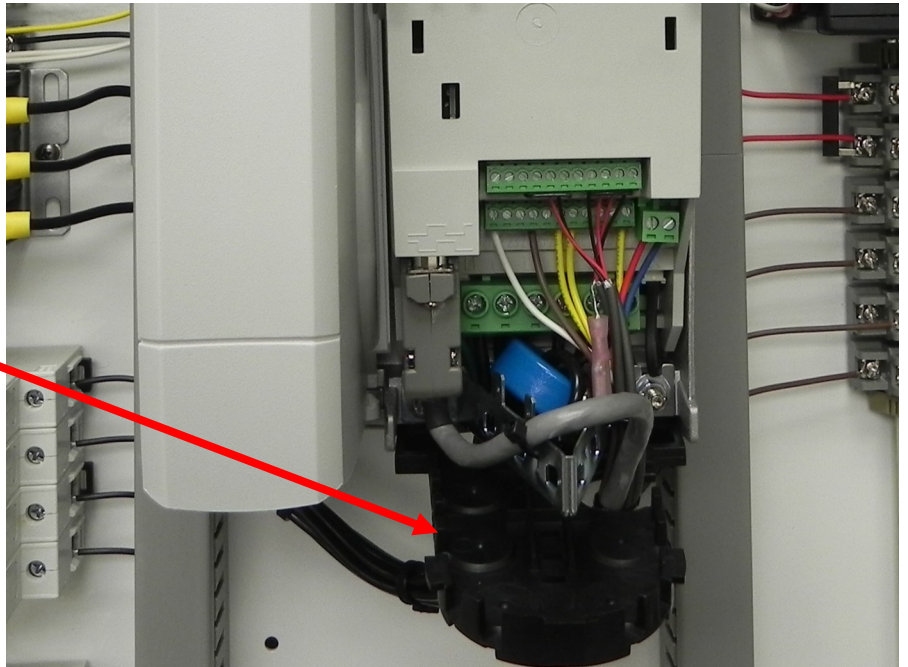
Tools Required:

- 5/16 socket
- 7/16" socket
- 7mm socket

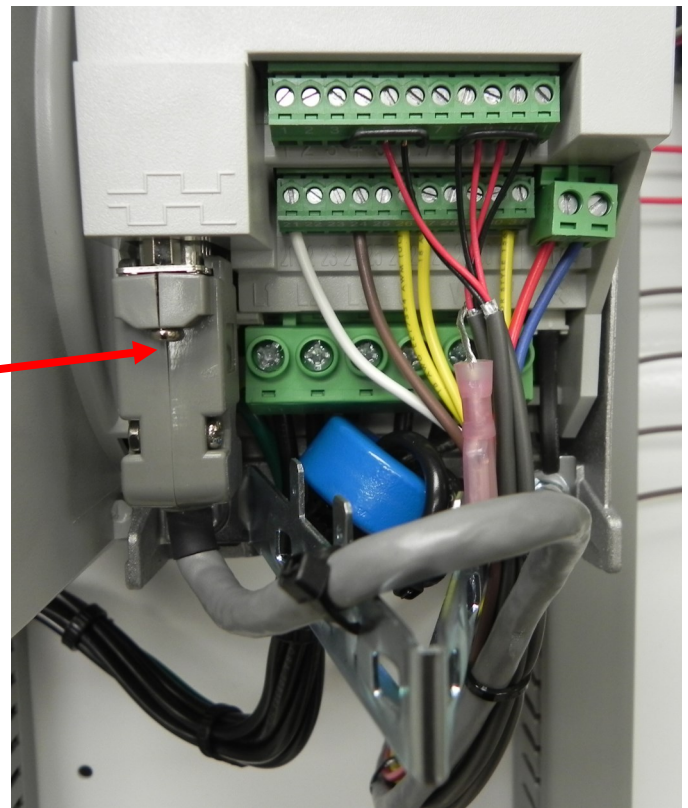
Loosen cover screw and remove cover



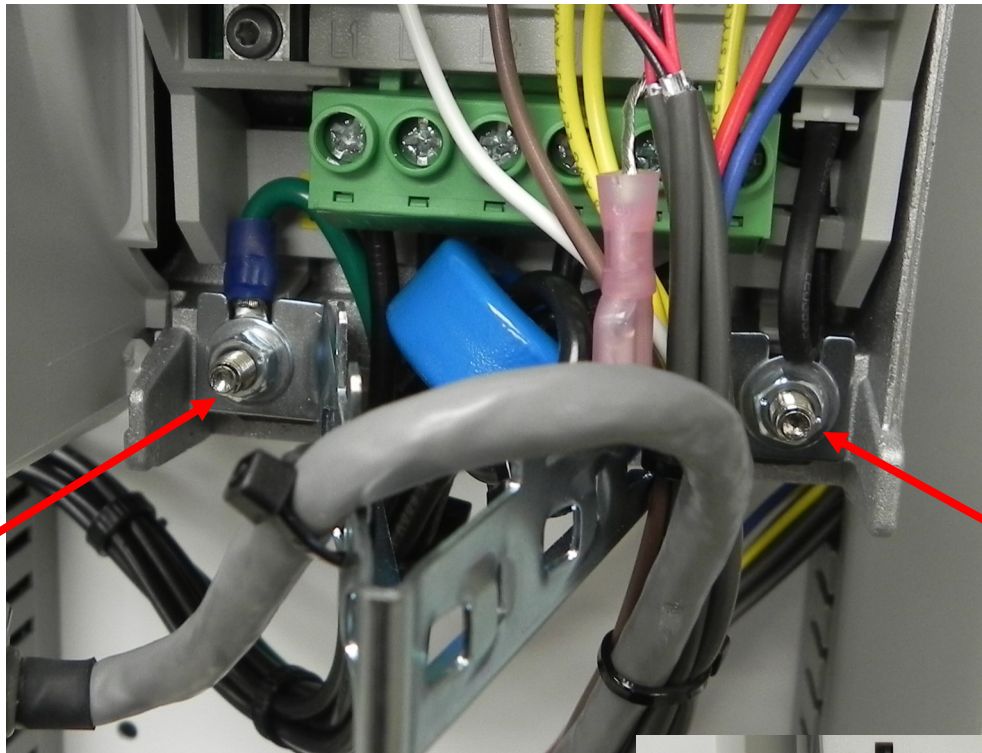
Remove bottom cover



Loosen connector screw (only one used)
and gently remove the encoder connector



Remove nut
using a 5/16"
socket wrench



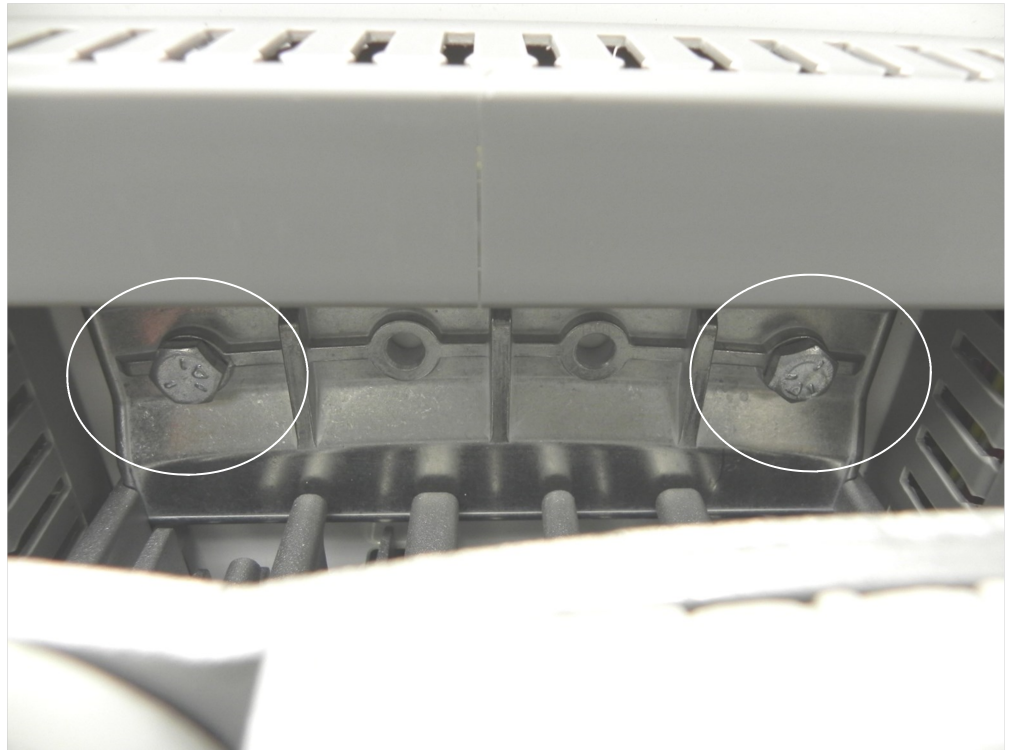
Loosen nut using
a 5/16"socket
wrench

Remove ground lug and gently pry the four connectors
out.

Cut the tie wrap holding the encoder cable to the grounding
bracket. This bracket will be replaced.

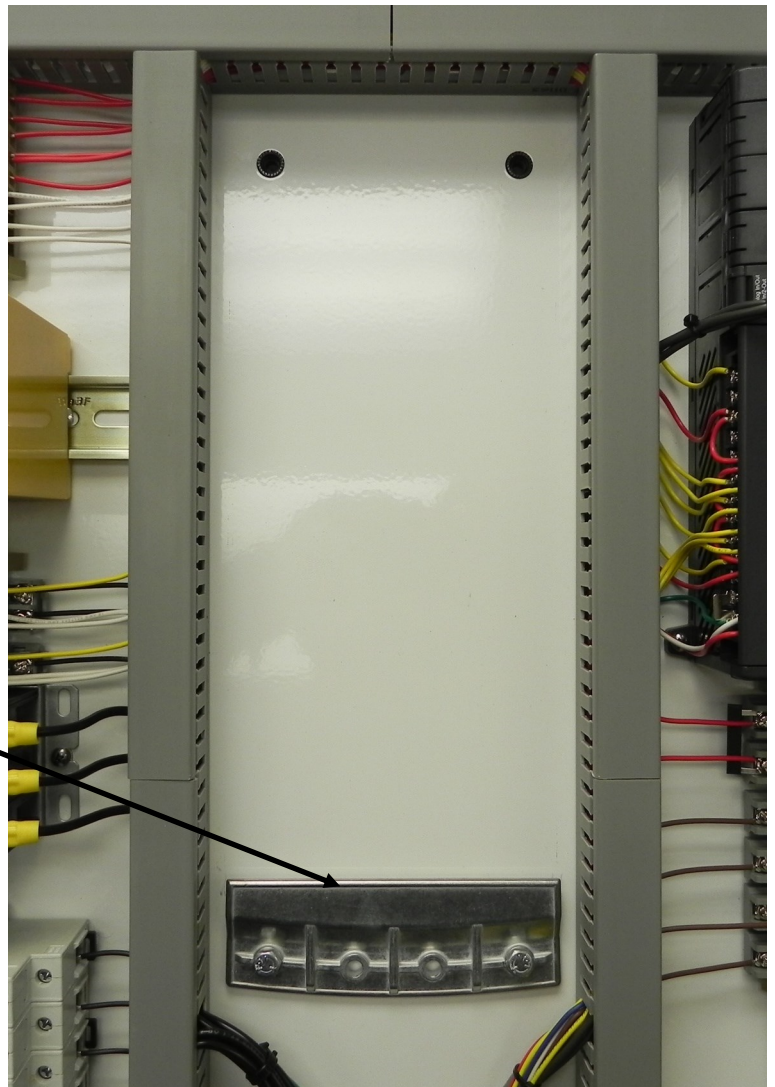


Remove the top two 1/4" bolts



Lift the inverter up and remove

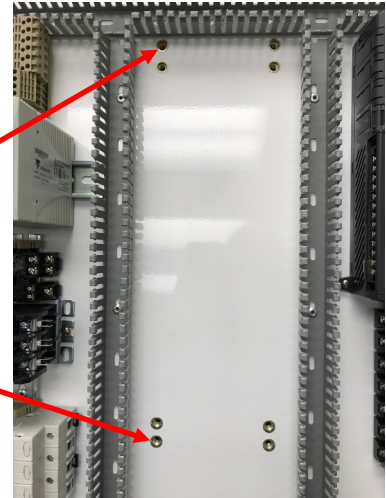
Remove the bottom support



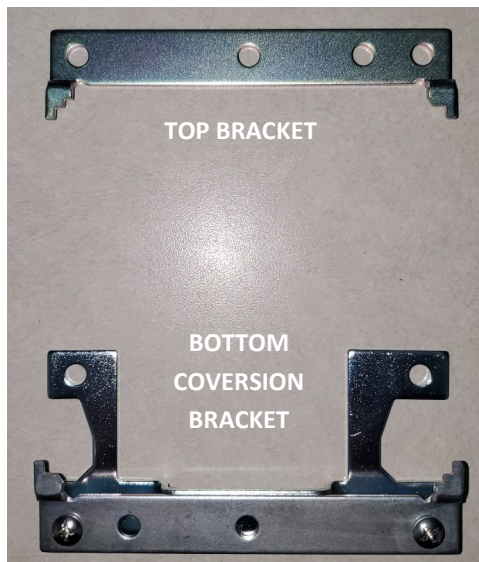
Installing the replacement inverter

If the back panel has 8 nut inserts (four at the top and four at the bottom) the conversion bracket is not required.

Use the very top and bottom nut inserts.



If the back panel has four nut inserts (two at the top and two at the bottom), a conversion bracket for the bottom two inserts will be required.

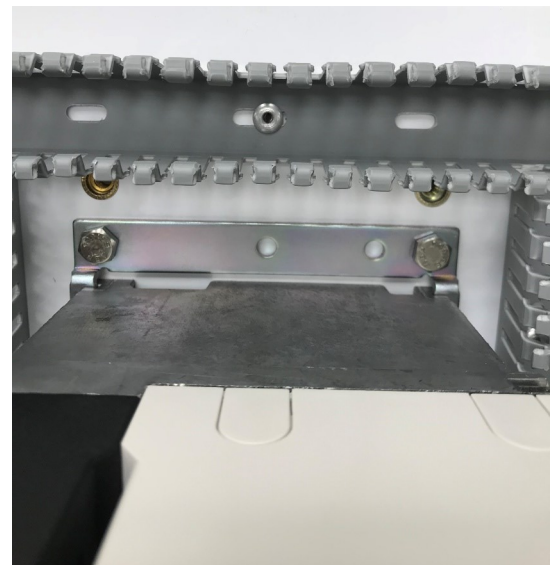


Bolt the bottom bracket to the back panel (do not tighten at this point).

Slide the new inverter on the bottom bracket

Slide the top bracket to the top of the inverter and bolt to the back panel.

Secure (do not over tighten) all four bolts.

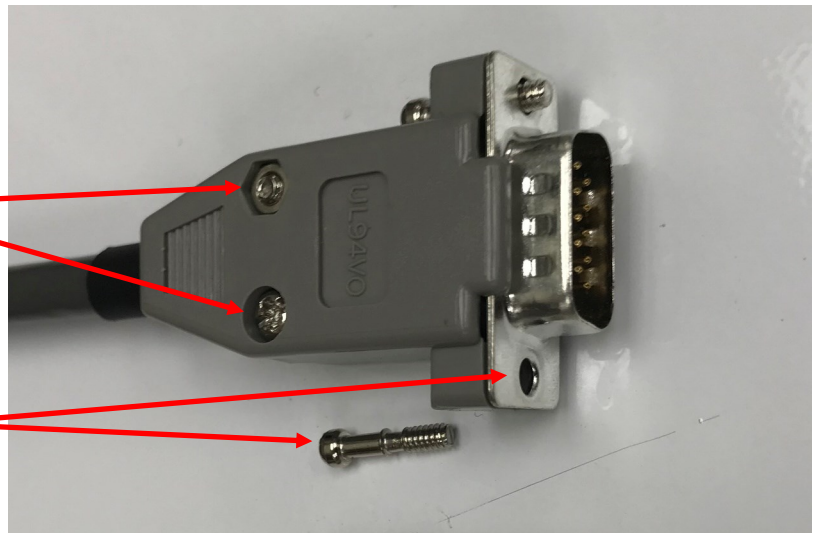


The existing encoder cable will need a second screw installed (older units will not have a housing).

Loosen the two connector housing screws .

Install the second screw

Tighten the two connector housing screws.



The only connector that will have to be replaced is the large green power connector.

Install the numbered wire markers as shown.

(Wire markers may be numbered adhesive tape strips)

Remove wires and re-install into the black connector in the same sequence.



VERY IMPORTANT

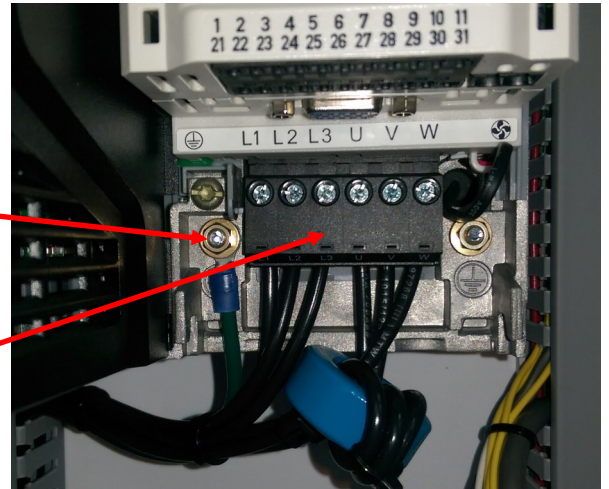
The six wires must be re-installed in the same order as removed from the green connector.



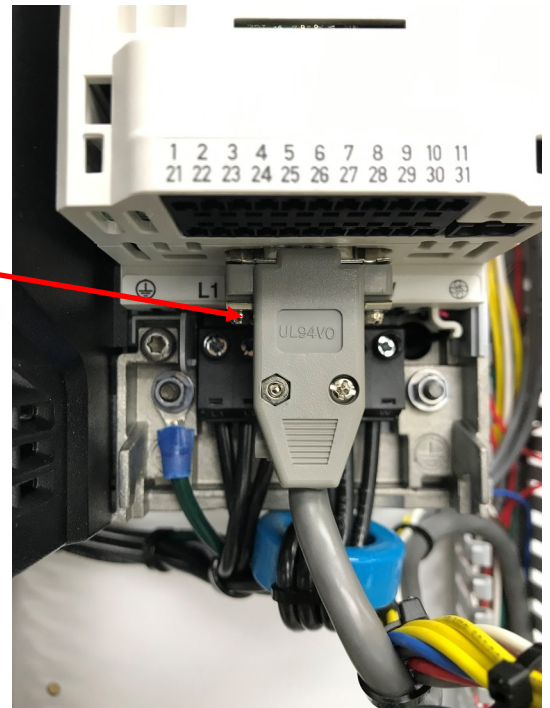
A 7mm socket is required for the remainder of the installation.

Reattach the ground lug under the left nut. Do not tighten yet.

Insert the power connector in to the inverter.
Make sure connector is well seated.

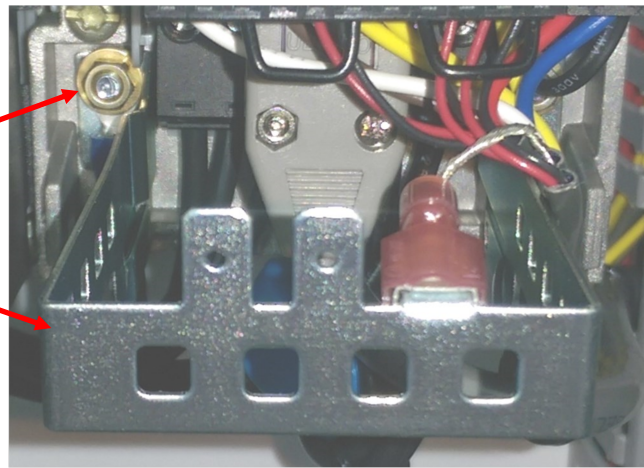


Re-connect the encoder connector and tighten both screws.



Slide the left side of the grounding bracket UNDER the ground lug and push up to the stud. Tighten nut.

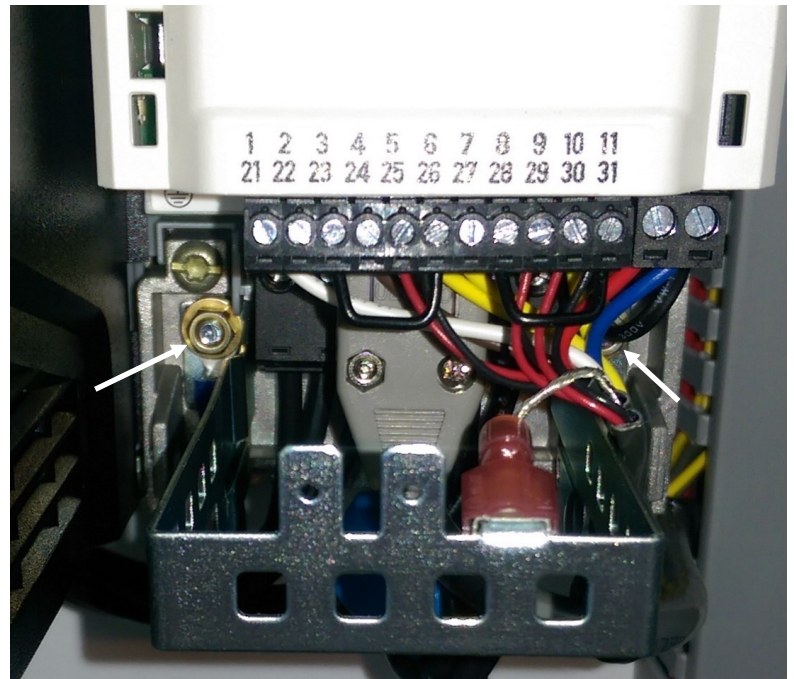
Grounding Bracket



Slide the right side of the grounding bracket under right nut and tighten (nut not visible in this picture).

Re-connect remaining green connectors.

Slide each side of the grounding bracket behind the two nuts and tighten both nuts.



Replace cover and test.